

# **Visit of Parimal Garden, Ahmedabad**

**For Semester-6 Botany Students  
Academic Year: 2022-23  
Visit Dt: 17th March 2023**

**Teacher Incharge:  
Dr Tushar Parmar  
Dr Nirali Vora**

**Gujarat Arts & Science College,  
Ahmedabad**

Parimal Garden visit organized as per syllabus requirement of Semester-6 Botany, on 17<sup>th</sup> March 2023, a group of Semester-6 students of Botany subject go together by two faculties of the subject Dr. Tushar Parmar and Dr Nirali Vora. The main purpose of this visit was to provide students with the live Garden Plants identification and expand their Botanical knowledge, horticulture knowledge, gardening skill, nursery skill, propagation techniques and an understanding of the importance of conserving plant diversity.

#### **Area Information:**

Parimal Garden officially known as **Pari Trikamlal Bhogilal Municipal Recreation Park, Ambawadi**. It covers an area of 8.5 acres It was build in 1960 and redeveloped in 1998 and 2021. Previously this area called Ambawadi literally means 'Mango Tree Plantation' it means entire area has huge amount of Mango Tree were there nowadays only scarce patches are there in Shreyas Foundation and Rasala Park etc. The garden was designed by Kamal Magaldas and Aniket Bhagwat owned by AMC, Ahmedabad and Operated by Torrent Group. It is said that the more than 400 years old Banyan Tree is there. This garden have many features *viz.* Large water Pond, many beautiful fountains, Beautiful landscape with very interesting and useful interior design, Well developed Gymnasium, Outdoor garden Gym, Walk way, Amphitheatre, Green House, Children's Play area, Barricaded sport zones (Cricket, Volleyball), Group seating arrangement and many more.

To witness the beauty of nature, Parimal Garden offers a variety of flowers to enthuse the feeling of joy and happiness in oneself. There are more than 100 varieties of species in this Garden full of flowers located in this garden. The unique feature of this Garden is every area is developed such way that each and every person belong to any age group have their activities, relaxation and space available in very small beautiful area be in the right place in Ahmedabad. This place is for every kind of person *viz.* athletic person, Nature students, Children, Senior citizen, leisure person. The pond Walkover Bridge and splendor pink canopy dense bougainvillea climber cover seating arrangement gave motivation for reading and sometime zen mode feeling. The levels of the park are modulated so as to provide uninterrupted views of the river. A continuous Riverside Promenade was designed and its levels carefully planned, keeping the view aspects in mind. Large wide mounds are also provided to afford panoramic views. The Spatial organization of the park allows a number of linearly placed themed areas within it, catering to different preferences, activity levels & age groups.

#### **Activities and Highlights:**

- **Guided Tour:**

The visit began with a guided tour led by experienced teachers. Main purpose of our excursion is to locate each and every corner plants of the garden and make a list of Plants

means ornamental plant list and if encounter any Birds and animals we also refer it. This information will in a straight line give many understanding for the final year students clear concept about the Gardening Subject. As compare to our previous years field visits of this park and now after renovation of this park during 2021 many new ornamental species added to this garden, few landscape gives a beauty and few features were added extraordinary Important value to the garden. Both the faculties provided insightful information about the history of the parks, list of plants, various sections of the gardens, pond ecology and explored more than 100 ornamental species of Plants (Including Tree, small tree, climber, Shrub and Herbs) listed. During excursion many birds' and animals species were identified during the trail.

- **Plant Diversity:**

Several interactive sessions were conducted throughout the visit by the Faculty, covering topics such as plant taxonomy, medicinal uses of plants, Garden Landscape, Horticulture Plants, Kitchen Gardening, and the significance of conservation efforts, climate change and their retrospective effect on the environment.

Following are the list of Plants explain during the visit of the Garden

Sr No	Botanical Name	Common Name	Family
1.	<b>Aglonema sp</b>		<b>Araceae</b>
2.	<b>Alcea rosea</b>	<b>Holyhock</b>	<b>Malvaceae</b>
3.	<b>Annona squamosa</b>	<b>Sitafal</b>	<b>Annonacea</b>
4.	<b>Aegle marmelos</b>	<b>Bili Patra</b>	
5.	<b>Angelonia salicariifolia</b>	<b>Angelonia</b>	<b>Plantaginaceae</b>
6.	<b>Alpinia zerumbet</b>	<b>Shell Ginger</b>	<b>Zingiberaceae</b>
7.	<b>Azadirachta indica</b>	<b>Neem</b>	<b>Meliaceae</b>
8.	<b>Asystasia gangetica</b>	<b>Chinese violet</b>	<b>Acanthaceae</b>
9.	<b>Annona reticulate</b>	<b>Ramfal</b>	<b>Annonaceae</b>
10.	<b>Alstonia scholaris</b>	<b>Devil's Tree</b>	<b>Apocynaceae</b>
11.	<b>Allamanda cathartica</b>	<b>Golden Trumpet</b>	<b>Apocynaceae</b>
12.	<b>Alpinia purpurata</b>	<b>Red Ginger</b>	<b>Zingiberaceae</b>
13.	<b>Alocasia cucullata</b>	<b>Chinese Taro</b>	<b>Araceae</b>
14.	<b>Adhatoda vasica</b>	<b>Ardusi</b>	<b>Acanthaceae</b>

15.	<b>Aloe vera</b>	<b>Aloe</b>	<b>Liliaceae</b>
16.	<b>Butea monosperma</b>	<b>Flame of the Forest</b>	<b>Fabaceae</b>
17.	<b>Bauhinia variegata</b>	<b>Kovidar</b>	<b>Fabaceae</b>
18.	<b>Bougainvillia spectabilis</b>	<b>Great Bougainvillia</b>	<b>Nyctaginaceae</b>
19.	<b>Bambusa vulgaris</b>	<b>Bamboosa</b>	<b>Poaceae</b>
20.	<b>Buddlesia cordata</b>	<b>Tapozan</b>	<b>Scrophulariaceae</b>
21.	<b>Canna indica</b>	<b>Canna</b>	<b>Cannaceae</b>
22.	<b>Canna generalis</b>	<b>Canna Lily</b>	<b>Cannaceae</b>
23.	<b>Crinum asiaticum</b>	<b>Crinum</b>	<b>Amaryllidaceae</b>
24.	<b>Chlorophyttum comosum</b>	<b>Trumphet Lilly</b>	<b>Asparagaceae</b>
25.	<b>Cestrum nocturnum</b>	<b>Night Blooming Jasmine</b>	<b>Solanaceae</b>
26.	<b>Cestrum diurecum</b>	<b>Day Blomming Jasmine</b>	<b>Solanaceae</b>
27.	<b>Catharanthus roseus</b>	<b>Periwinkle</b>	<b>Apocynaceae</b>
28.	<b>Cordea sabestina</b>	<b>Vilayati Gundi</b>	<b>Boraginaceae</b>
29.	<b>Cordea dichotoma</b>	<b>Gundi</b>	<b>Boraginaceae</b>
30.	<b>Codiaeum variegatum</b>	<b>Croton</b>	<b>Euphorbiaceae</b>
31.	<b>Cassia alata</b>	<b>Senna</b>	<b>Fabaceae</b>
32.	<b>Cassia fistula</b>	<b>Garmado</b>	<b>Fabaceae</b>
33.	<b>Cassia javanica</b>	<b>Pink Cassia</b>	<b>Fabaceae</b>
34.	<b>Cassia siamea</b>	<b>Kashid</b>	<b>Fabaceae</b>
35.	<b>Callistemon lanceolatus</b>	<b>Bottle Brush</b>	<b>Fabaceae</b>
36.	<b>Coccus nucifera</b>	<b>Coconut</b>	<b>Palmaceae</b>
37.	<b>Caryota urens</b>	<b>Shiv Jata tree</b>	<b>Palmaceae</b>
38.	<b>Cymbopogon citratus</b>	<b>Lemmon Grass</b>	<b>Poaceae</b>
39.	<b>Dieffenbachia seguine</b>	<b>Dumbcane</b>	<b>Araceae</b>
40.	<b>Dendrocalamus strictus</b>	<b>Solid Bamboo</b>	<b>Poaceae</b>

41.	<i>Duranta recta</i>	Pigeon Berry	Verbenaceae
42.	<i>Draceana major</i>	Draceana	Asparagaceae
43.	<i>Draceana minor</i>	Draceana	Asparagaceae
44.	<i>Derris indica</i>	Indian Beech	Fabaceae
45.	<i>Dombeya sp</i>	Pink Fall	Malvaceae
46.	<i>Epipremnum aureum</i>	Money Plant	Araceae
47.	<i>Epipremnum pinnatum</i>	Surpankha	Araceae
48.	<i>Eucalyptus globulus</i>	Nilgiri	Myrtaceae
49.	<i>Erythrina indica</i>	Indian Coral Tree	Fabaceae
50.	<i>Euphorbia tithymaloides</i>	Padiculanthus	Euphorbiaceae
51.	<i>Ficus benghalensis</i>	Banyan	Urticaceae
52.	<i>Ficus religiosa</i>	Pipalo	Urticaceae
53.	<i>Ficus tseila</i>	Pipal	Urticaceae
54.	<i>Ficus glomerota</i>	Umaro	Urticaceae
55.	<i>Ficus benghamina</i>	Benjamin tree	Urticaceae
56.	<i>Ficus microcarpa</i>	Malyan Banyan	Urticaceae
57.	<i>Hibiscus rosa sinensis</i>	Jassod	Malvaceae
58.	<i>Hamelia patens</i>	Hamelia	Rubiaceae
59.	<i>Heterophragma adenophyllum</i>	Katsagon	Bignoniaceae
60.	<i>Galphinia gracilis</i>	Gold Shower	Malpigiaceae
61.	<i>Gliricidia sepium</i>	Maxican Liliac	Fabaceae
62.	<i>Imperata cylindrica</i>	Red Baron Grass	Poaceae
63.	<i>Ixora coccinea</i>	Red Ixora	Rubiaceae
64.	<i>Ixora finlaysoniana</i>	White Ixora	Rubiaceae
65.	<i>Jasminum sambac</i>	Mogra	Oleaceae
66.	<i>Jasminum multiflorum</i>	Jui	Oleaceae

67.	<i>Jatropha pandurifolia</i>	Garden Jatrpha	Euphorbiaceae
68.	<i>Kigelia pinnata</i>	Sausage Tree	Bignoniaceae
69.	<i>Lawsonia inermes</i>	Henna	Mythraceae
70.	<i>Lantana camera</i>	West India Lantana	Verbenaceae
71.	<i>Leucophyllum frutescens</i>	Purple Sage	Scrophulariaceae
72.	<i>Licuala grandis</i>	Palas Palm	Arecaceae
73.	<i>Manilkara hexandra</i>	Palu	Sapotaceae
74.	<i>Manilkara zapota</i>	Chikku	Sapotaceae
75.	<i>Mitragyna parviflora</i>	Kadamba	Rubiaceae
76.	<i>Morus alba</i>	Sehtoot	Urticaceae
77.	<i>Nyctanthes arbor-tritis</i>	Parijat	Oleaceae
78.	<i>Nymphaea sp</i>	Water Lily	Nymphaeaceae
79.	<i>Nelumbo nucifera</i>	Lotus	Nelumbonaceae
80.	<i>Peltophorum roxburghi</i>	Peltophorum	Cesalpiniaceae
81.	<i>Plumbago auriculata</i>	Blue Plumbago	Plumbaginaceae
82.	<i>Parkinsonia aculeata</i>	Ram Babool	Mimosaceae
83.	<i>Polyalthia longifolia</i>	Asopalav	Annonaceae
84.	<i>Plumeria rubra</i>	Champa	Apocynaceae
85.	<i>Plumeria alba</i>	Champa	Apocynaceae
86.	<i>Petunia sp</i>	Petunia	Solanaceae
87.	<i>Rosa indica</i>	Rose	Rosaceae
88.	<i>Stachytarpheta</i> <i>cayennensis</i>	Blue Sankeweed	Verbenaceae
89.	<i>Salvia sp</i>	Salvia	Lamiaceae
90.	<i>Stachytarpheta mutabilis</i>	Pink Snakeweed	Verbenaceae
91.	<i>Sensevieria nilotica</i>	Snake Plant	Sensevieriaceae
92.	<i>Sensevieria cylindrica</i>	Snake Plant	Sensevieriaceae

93.	<b>Solidago virgaurea</b>	<b>Goldennods</b>	<b>Asteraceae</b>
94.	<b>Tulbaghi violacea</b>	<b>Society Garlic</b>	<b>Amaryllidaceae</b>
95.	<b>Terminalia arjuna</b>	<b>Arjun Sadad</b>	<b>Combretaceae</b>
96.	<b>Terminalia catappa</b>	<b>Indian Almond</b>	<b>Combretaceae</b>
97.	<b>Terminalia bellirica</b>	<b>Baheda</b>	<b>Combretaceae</b>
98.	<b>Tecoma capensis</b>	<b>Cape Honey Suckle</b>	<b>Bignoniaceae</b>
99.	<b>Tecoma stans</b>	<b>Yellow Bell Flower</b>	<b>Bignoniaceae</b>
100.	<b>Thumbergia sp</b>	<b>Clockvines</b>	<b>Acanthaceae</b>
101.	<b>Turnera ulmifolia</b>	<b>Yellow Alder</b>	<b>Passifloraceae</b>
102.	<b>Tabebuia rosea</b>	<b>Rosy Triumphet</b>	<b>Bignoniaceae</b>
103.	<b>Tabebuia aurea</b>	<b>Tree of Gold</b>	<b>Bignoniaceae</b>
104.	<b>Wedelia sp</b>	<b>Creeping Oxeyes</b>	<b>Asteraceae</b>

- **Educational Workshops:**

The botanical garden showcased an impressive array of plant species from around the world, including rare, endangered ones and valuable plants. Students had the opportunity to observe a wide range of plants, from huge banyan trees to delicate small society garlic plant. The diversity of plant forms, textures, and colours fascinated and intrigued the visitors.

- **Inspiring Landscapes:**

The botanical garden offered not only educational value but also aesthetic beauty. Visitors were captivated by the meticulously designed landscapes, themed gardens, and artistic plant arrangements. These displays showcased how plants can be harmoniously integrated into various settings.

- **Learning Outcomes:**

The visit to Arboretum and Garden at Parimal Garden, Ahmedabad, enriching experience for the students of Botany Department of Gujarat Arts and Science College, Ahmedabad. The following are different key learning outcomes for students:

1. Landscape design	2. Endangered Species
3. Flowering Plants	4. Hydrophytes
5. Green House/ & Plants	6. Features of Gardens

7. Medicinal Plants	8. Propagation Techniques
9. Principles of Garden Design	10. Scope of Horticulture
11. Nursery Management	12. Ecological studies
13. Conservation of Environment	14. Different Habitats
15. Flora and Fauna	16. Ethnobotany
17. Economic Botany	18. Kitchen Garden
19. Ornamental Plants	20. Topiary
21. Xerophytes	22. Shade loving Plants
23. Water Birds	24. Amphitheatre
25. Importance of Plants in our life	

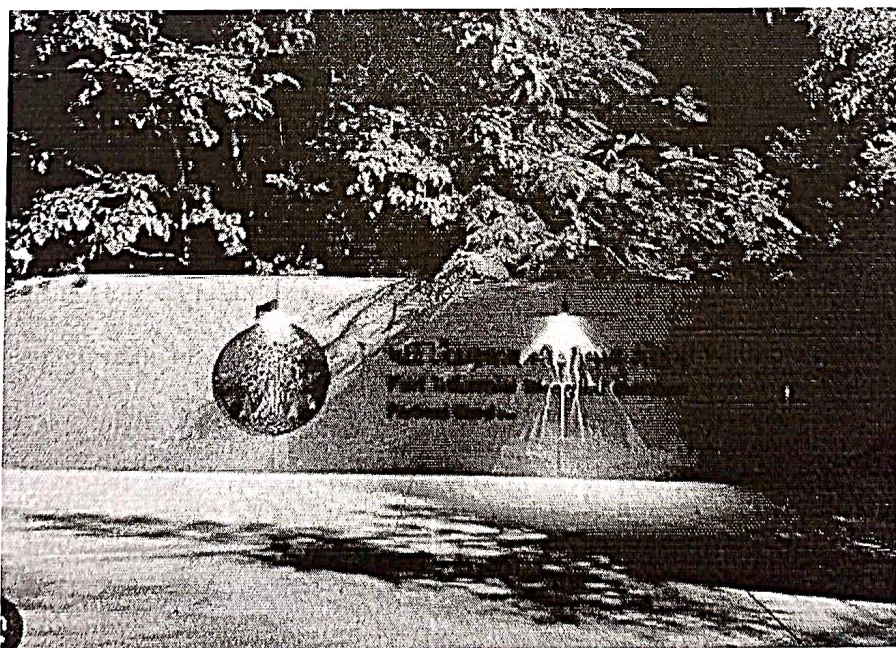
- **Enhanced Botanical Knowledge:**

Students gained a deeper understanding of plant diversity, taxonomy, medicinal uses and ecological relationships through direct observation and engagement and main purpose of the visit to gain knowledge of Horticulture subject.

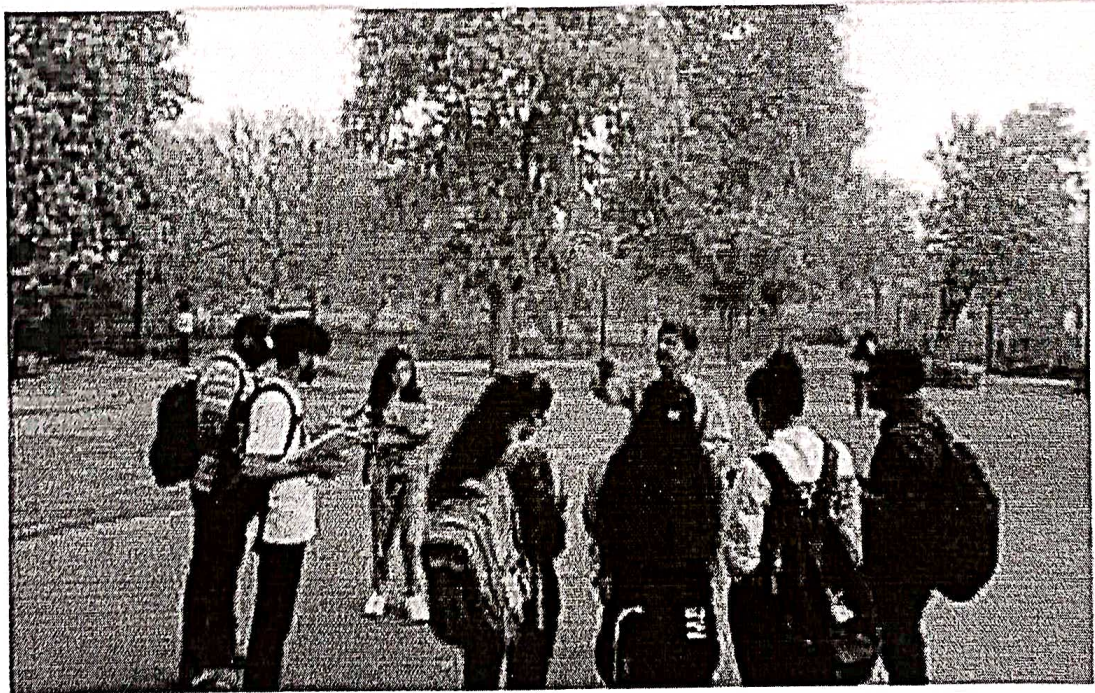
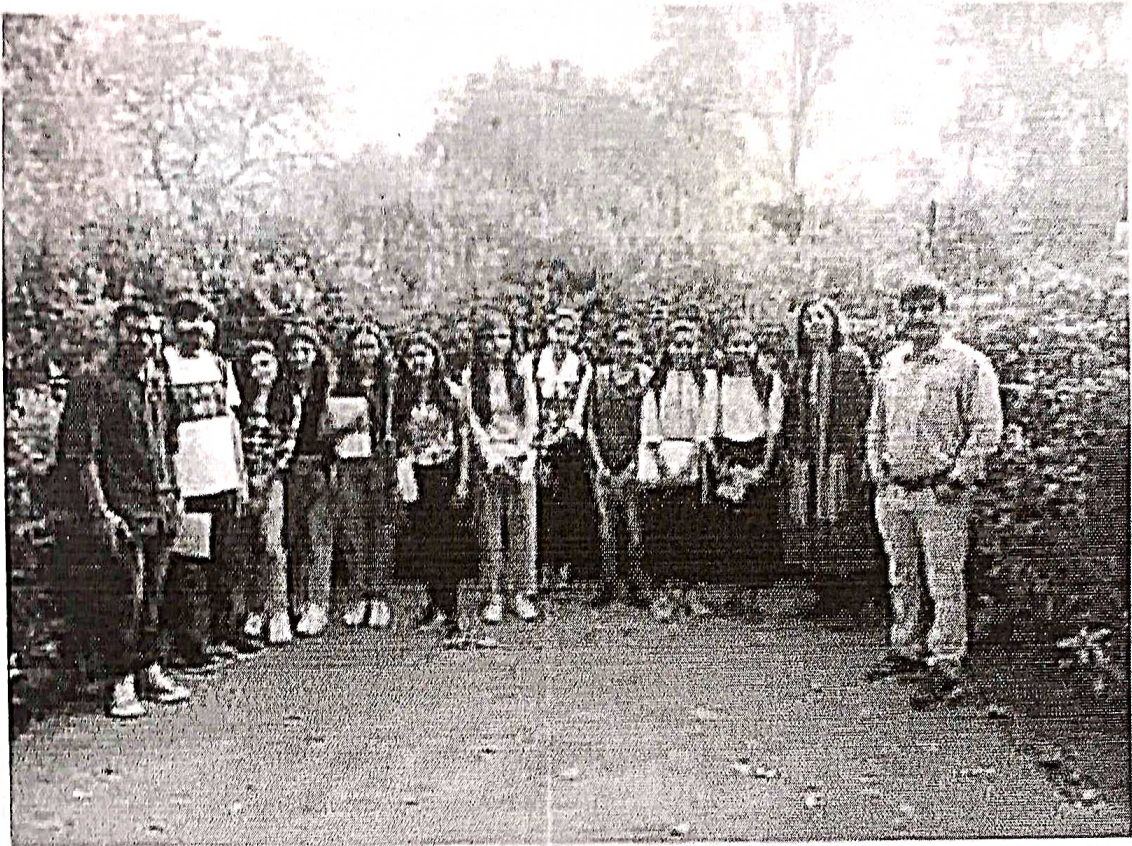
- **Conservation Awareness:**

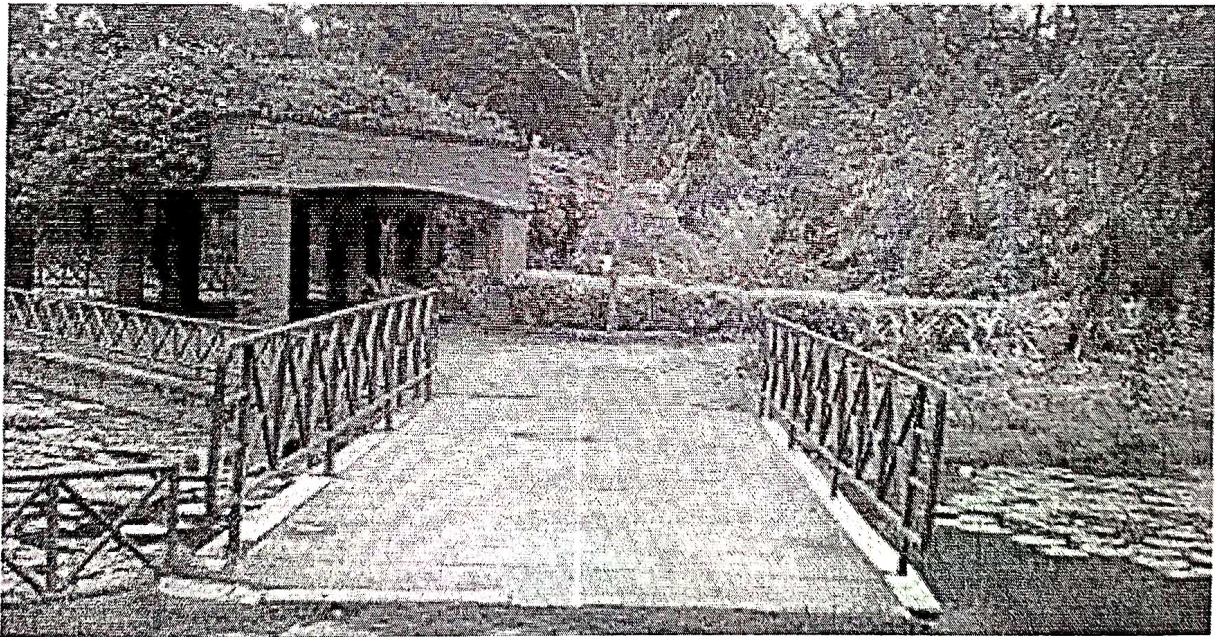
Participants developed an appreciation for the importance of plant conservation and the role that botanical gardens play in preserving endangered species and valuable plants, so one can see the specimen directly.

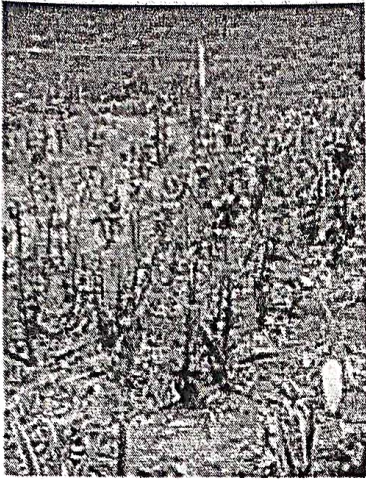
### Glimpse of Parimal Garden Visit







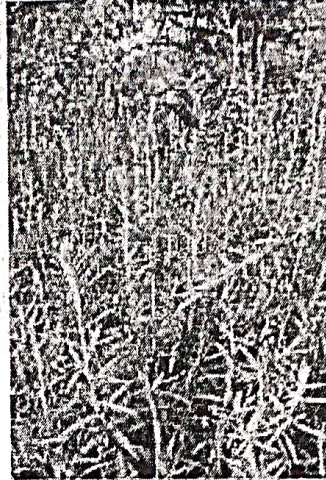




**Padiculanthus**

*Euphorbia tithymaloides*

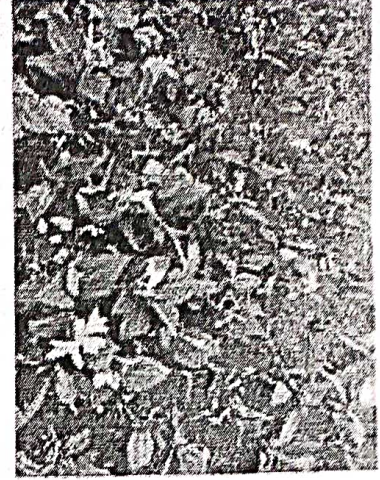
Spurge



**Angelonia**

*Angelonia salicariifolia*

Plantaginaceae

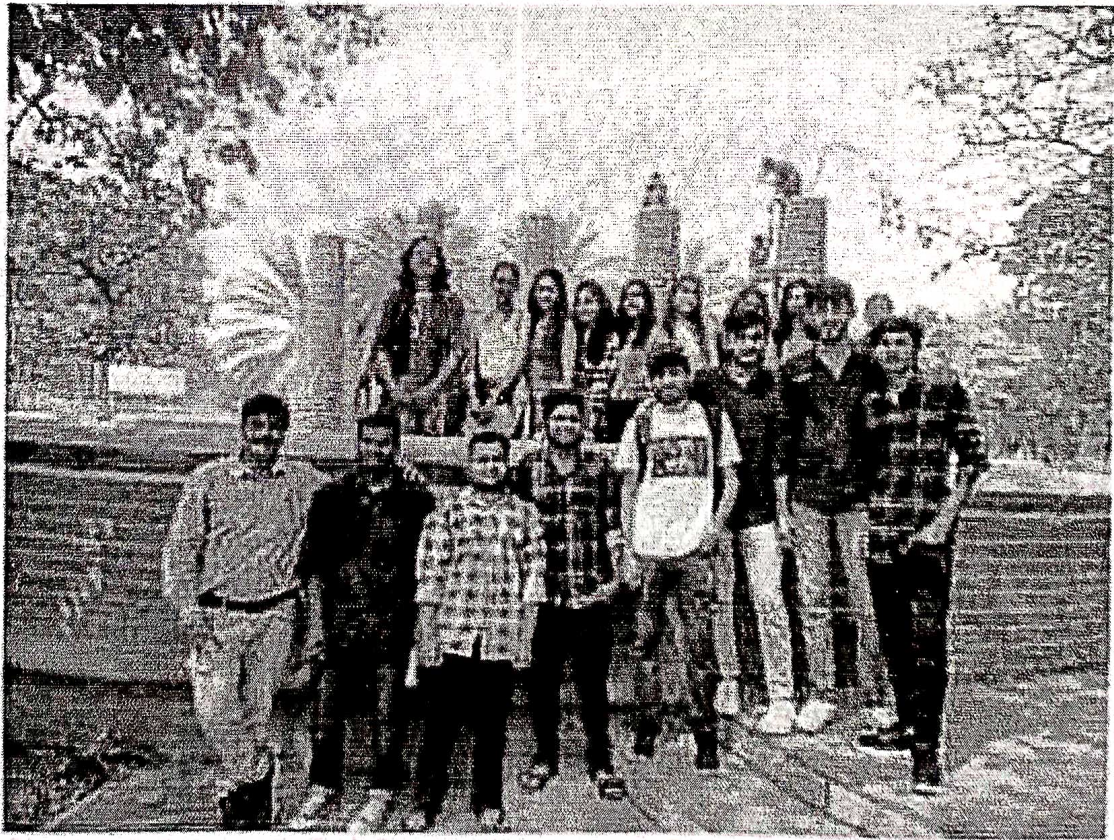
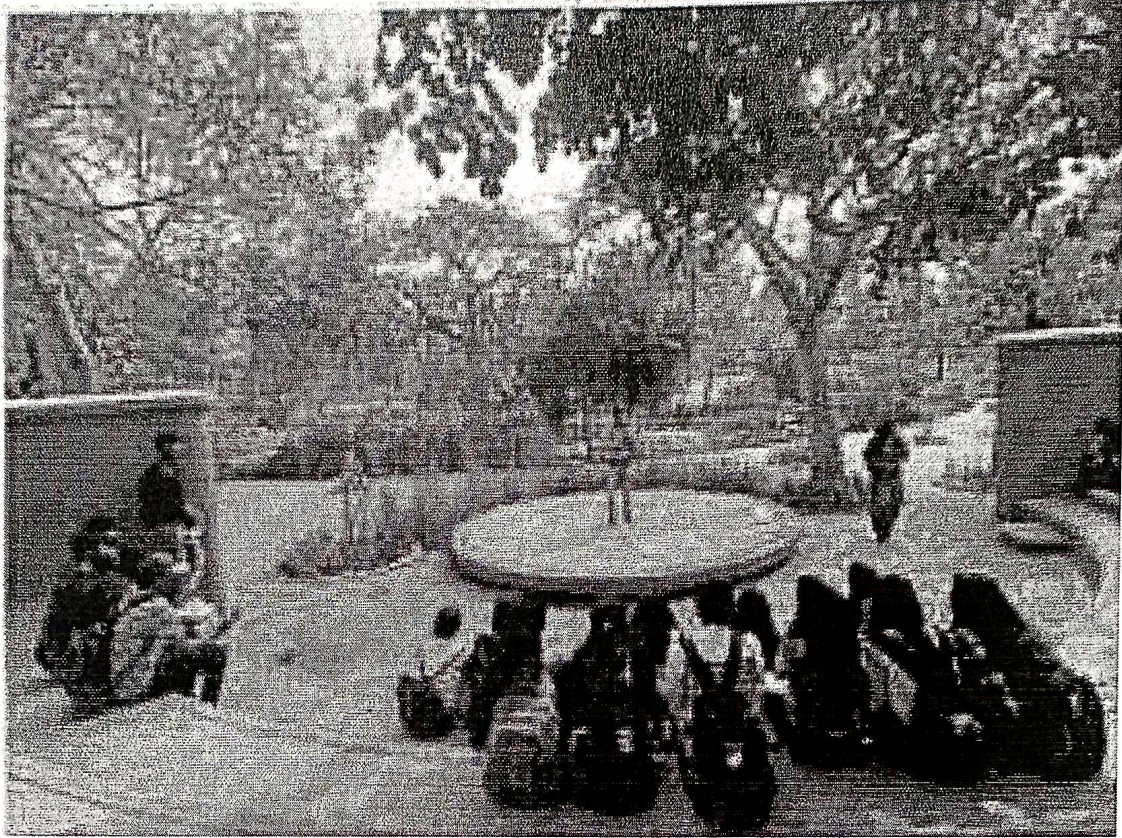


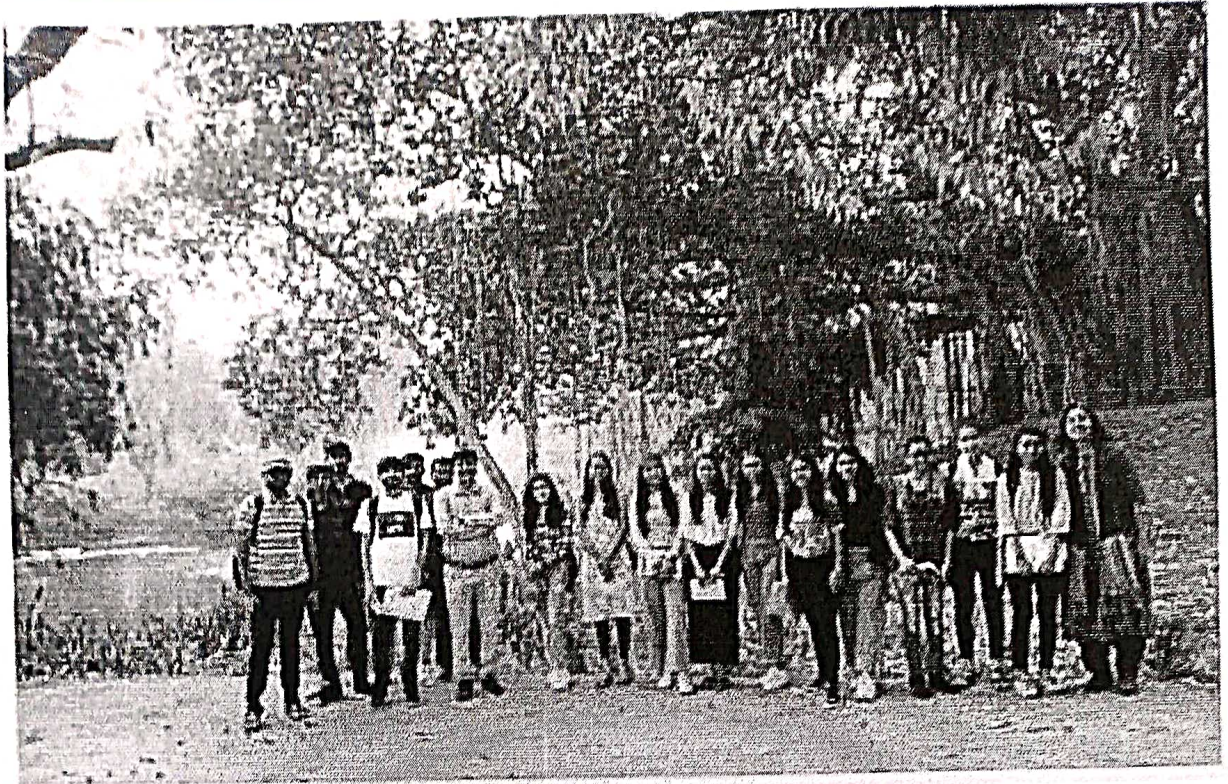
**Canna Lily**

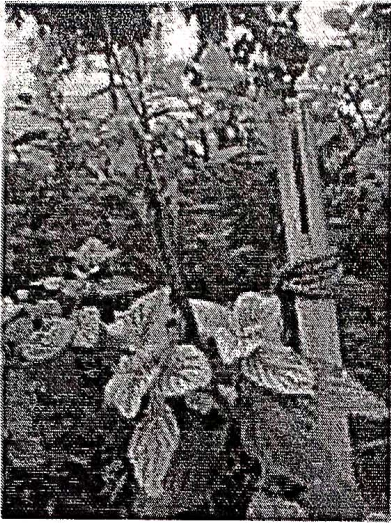
*Canna x generalis*

Cannaceae









**Pink Snakeweed**

*Stachytarpheta mutabilis*

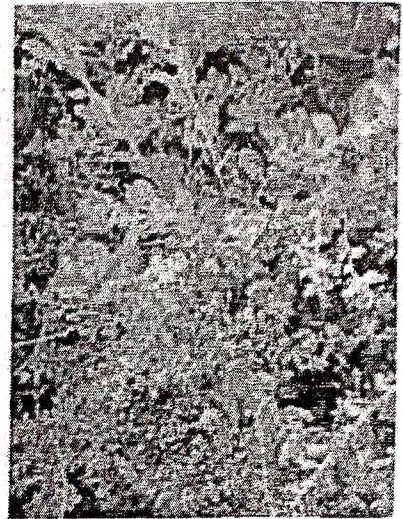
Verbenaceae



**Jatropha**

*Jatropha integerrima*

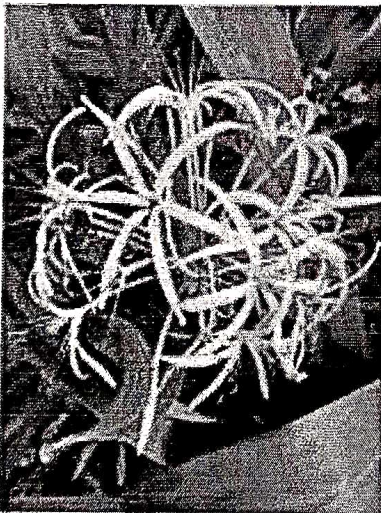
Euphorbiaceae



**Purple Sage**

*Leucophyllum frutescens*

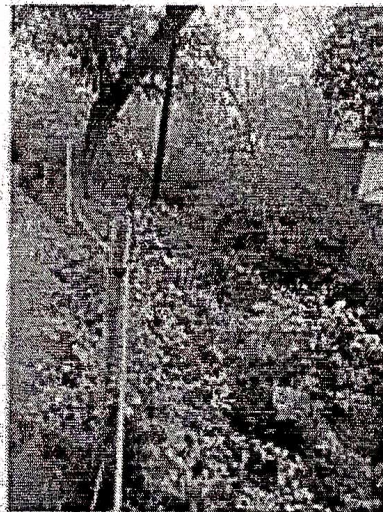
Scrophulariaceae



**Spider Lilly**

*Crinum asiaticum*

Amaryllidaceae



**Blue pumbago**

*Plumbago auriculata*

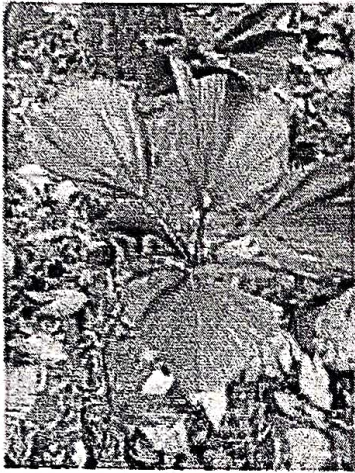
Plubaginaceae



**Society garlic**

*Tulbaghia violacea*

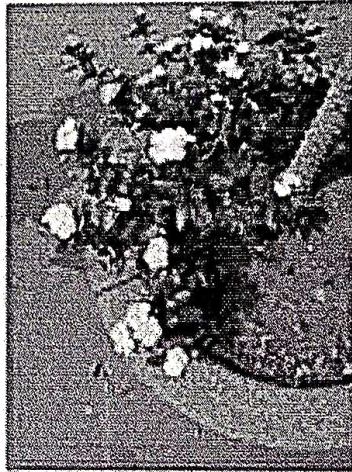
Amaryllidaceae



Palas palm

*Licuala grandis*

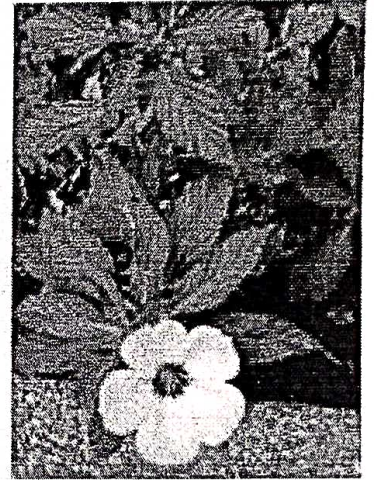
Areaceae



Periwinkle

*Vinca*

Apocynaceae



Yellow alder

*Turnera ulmifolia*

Passifloraceae


Garden Visit - List of Students  
B.Sc. Semester - 6 and Semester - 4  
Date: 17-03-2023

Roll No.	Name
	Semester - 6
346	CHAUDHARI PRERAKKUMAR ROHITBHAI
347	BHADAURIYA VARSHA HARISINGH
348	DABHI NILAMBEN KANUBHAI
349	DAMOR ADITYA GIRISHKUMAR
350	DAMOR PURVIBEN SHANKARBHAI
351	GANVIT VISHALBHAI HASMUKHBHAI
352	HARSODA SHUBHAM HARSHUKHBHAI
353	HIRAPARA KUNJ RAJNISHBHAI
354	JOGRAGIYA ANKITBHAI DHIRUBHAI
355	KALASVA CHIRAGKUMAR RAMANBHAI
356	KARISHMAKUMARI MEENA
357	KIMSARWALA SAMIR FARUKBHAI
358	KURKUTIYA NILAMBEN SOMALBHAI
359	LAKDAWALA HARSHALKUMAR MANUBHAI
360	MALI PRAMILAKUMARI JIVARAM
361	MANG ANKITABEN SUNILBHAI
362	MANSAWALA RIYANK RAMESHBHAI
363	MORI MEHULKUMAR VIRAMBHAI
364	PAL NEHA GANGASAGAR
365	PARMAR KHUSHI BAKULBHAI
366	PARMAR SIDDHRAJSINH JAYENDRASINH
367	PATEL NIKUNJKUMAR ISHVARBHAI
368	PATEL VRUSHTI KANAIALAL
369	PATEL YUKTAKUMARI ISHWARBHAI
370	RABARI NAVGHAN NAGJIBHAI
371	RAUT TEJASVINIBEN MANSYABHAI
372	RAVINAKUMARI MEENA
373	ROHIT MANSIBEN LAXMANBHAI
374	SARVAIYA SUJALSINH ARVINDSINH
375	SHARMA NISHA RAJPAL
376	TADVI HINAL KANUBHAI
377	FALGUNI VASAVA
378	VASAVA KETANKUMAR NARSING
379	VASAVA WILSON PACHIYABHAI
	Semester - 4
531	ANSARI HASNAIN SAMSUDDIN
532	BHANA VAT DHARUVKUMAR BHARATSING
533	BHEDI JANAKBHAI SARDARSINH
534	CHAUDHARY HARSH MALABHAI
535	CHAUDHARY PIYUSH JETABHAI



Garden Visit - List of Students  
B.Sc. Semester - 6 and Semester - 4  
Date: 17-03-2023

536	CHAVDA NIRAJ RAMSHIBHAI
537	GAMETI GAURAVKUMAR RAMJIBHAI
538	GUPTA SHIV SANTOSHKUMAR
539	JADAUN KRISHNA INDRAKUMAR SINGH
540	KHARADI AMANKUMAR FORNIYARBHAI
541	PARMAR MONIKABEN BACHUBHAI
542	PATEL DHARMESH ASHWINBHAI
543	PATEL KISHANKUMAR SANJAYKUMAR
544	PATEL MEHUL ISHWARBHAI
545	RAJPUT HETALKUMARI BHIMSINGH
546	SHAIKH RUSHDABANU MOHAMMEDRAFIK
547	SHARMA AKRITI RAJESHKUMAR
548	SHARMA PARUL HEMANTBHAI
549	TADVI HARDIKBHAI RAJESHBHAI
550	VASAVA NISHANTKUMAR ABHESINGBHAI

  
**Head**  
**Department of Biology**  
**Gujarat Arts & Science College**  
**Ahmedabad**